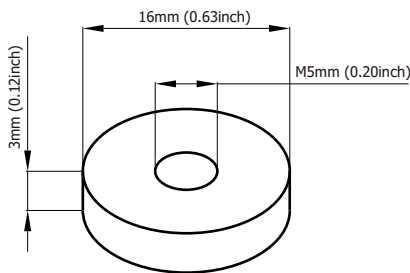
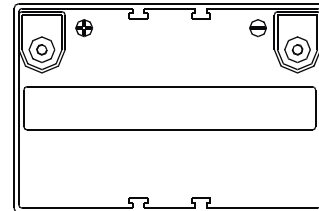
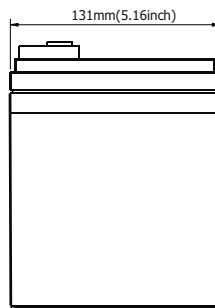
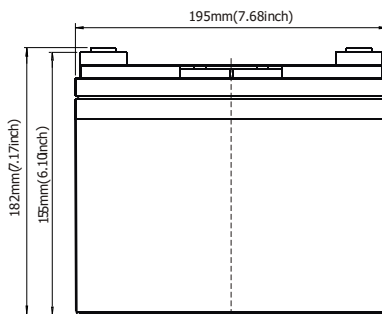


SLA BATTERY

BT 33-12M_{12V33AH}



Terminal Dimensions



General Series

General Series Valve Regulated Lead Acid batteries are designed with AGM (Absorbent Glass Mat) technology, high performance plates and electrolyte to gain extra power output for common power backup system applications widely used in the field of UPS, Emergency Lighting System.

Application

- Alarm System
- Cable Television
- Communication Equipment
- Control Equipment
- Security System
- Medical Equipment
- UPS
- Power tools
- Emergency Power System
- Toys

General Features

- Sealed and maintenance free operation.
- Non-Spillable construction design.
- ABS containers and covers(UL94HB, UL94V-0) optional.
- Safety valve installation for explosion proof.
- High quality and high reliability.
- Exceptional deep discharge recovery performance.
- Low self discharge characteristic.
- Flexibility design for multiple install positions.

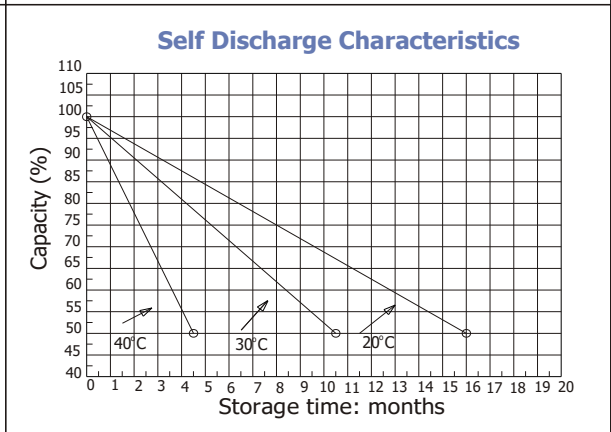
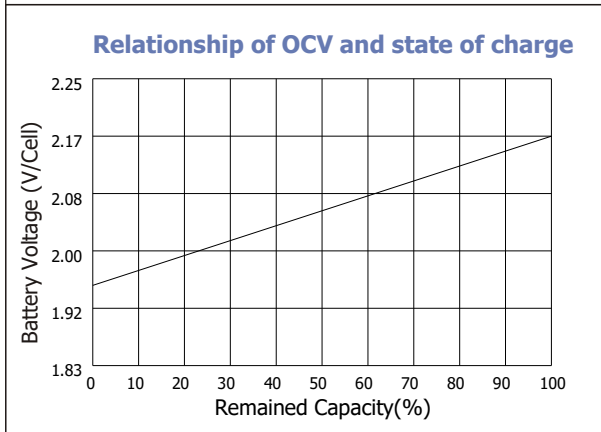
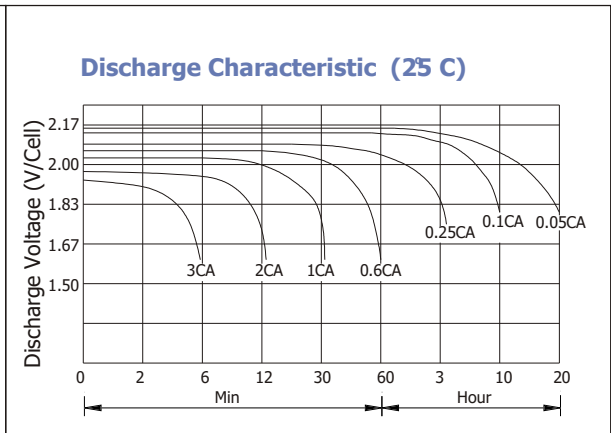
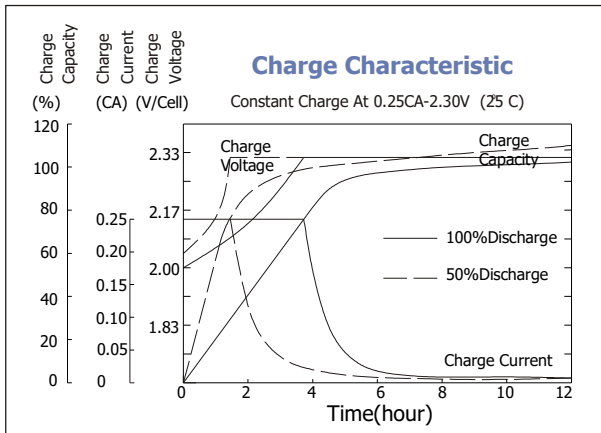
Construction

- ComponentRaw material
- PositiveLead dioxide
- NegativeLead
- ContainerABS
- CoverABS
- SealantEpoxy Resin
- Safety valveEPDR
- TerminalCopper
- SeparatorFiber glass
- ElectrolyteSulfuric acid

Battery Model	BT33-12M			
Designed Floating Life	8 Years			
Capacity(25 C)	20HR(1.73A,1.75V)	10HR(3.3A,1.75V)	5HR(5.9A,1.75V)	1HR(20.1A,1.75V)
	34.6AH	33AH	29.5AH	20.1AH
Dimensions	Length	Width	Height	Total Height
	195mm(7.68inch)	131mm(5.16inch)	155mm(6.10inch)	182mm(7.17inch)
Approx. Weight	10.2Kg (22.5 lbs)			
Internal Resistance	Full charged at 25 C: 0.01 Ohm			
Self Discharge	3% of capacity declined per month at (25 C)			
Capacity Affected by Temp.(20HR)	40° C	25° C	0° C	-15° C
	102%	100%	85%	65%
Charge Voltage(25 C)	Cycle use		Float use	
	14.4-15V(-30mV/° C), max. Current: 8.25A		13.6-13.8V(-20mV/° C)	

SLA BATTERY

BT 33-12M₁2V33AH



Constant current discharge ratings-amperes at 25 C

F. V/Time	5MIN	10MIN	15MIN	30MIN	1HR	3HR	5HR	10HR	20HR
1. 60V	112. 0	76. 8	56. 0	33. 6	20. 7	8. 54	5. 97	3. 50	1. 74
1. 67V	100. 8	70. 1	54. 4	32. 6	20. 6	8. 51	5. 92	3. 45	1. 73
1. 70V	95. 7	67. 5	52. 5	32. 0	20. 6	8. 51	5. 92	3. 42	1. 73
1. 75V	85. 1	62. 4	49. 6	31. 4	20. 3	8. 45	5. 87	3. 36	1. 73
1. 80V	76. 8	57. 9	47. 4	30. 4	20. 1	8. 42	5. 83	3. 30	1. 66
1. 85V	58. 2	47. 7	41. 0	28. 0	19. 9	8. 39	5. 78	3. 24	1. 62

Constant power discharge ratings-watts at 25 C

F. V/Time	5MIN	10MIN	15MIN	30MIN	1HR	3HR	5HR	10HR	20HR
1.60V	185	127	99. 2	63. 4	41. 6	16. 8	11. 7	6. 79	3. 37
1.67V	175	126	98. 2	62. 1	40. 2	16. 8	11. 7	6. 68	3. 36
1.70V	164	123	96. 6	60. 5	39. 2	16. 8	11. 7	6. 63	3. 36
1.75V	152	115	90. 9	58. 9	38. 8	16. 5	11. 6	6. 52	3. 35
1.80V	137	107	85. 4	57. 3	38. 1	16. 3	11. 4	6. 41	3. 23
1.85V	109	88. 3	74. 6	52. 5	37. 8	16. 2	11. 2	6. 29	3. 03

